

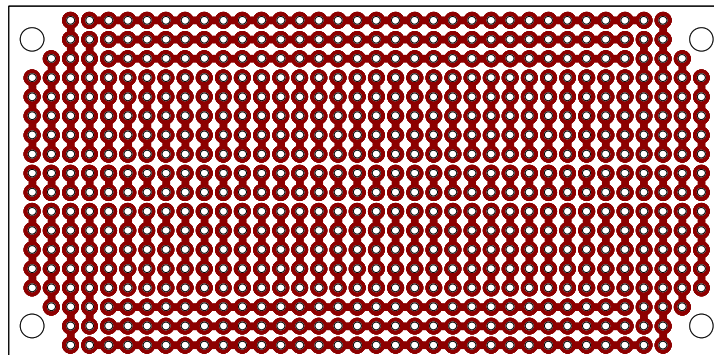
# SB404 - Solderable PC BreadBoard

*Transfer your circuit to this permanent circuit board from a plug-in breadboard to create a rugged long-lasting prototype.*

## Features

- Transfer your circuit and wires without recutting wires or changing your layout. The SB404 Solderable PC BreadBoard has the same pattern as a standard 400 connection point BB400 plug-in breadboard with power rails.
- SB404 is similar to SB400, but 4 mounting holes and a top-side silkscreen are added. The power rails are moved inwards to be on the 0.1" grid to allow capacitors to be more easily used.
- Make your prototype rugged. Soldered joints provide a more reliable long-term connection than solderless plug-in contacts.
- Standard 5-hole strip for each IC pin, just like solderless breadboards.
- Four power rails are provided along the edges like a breadboard, plus 2 bonus rails.
- Bonus centerline 2 hole pads provide an easy way to mount DIL headers.
- 0.1" hole spacing for DIP integrated circuits and headers. Pads are connected with thinner 0.040" tracks for easier track cutting when required.

## Board Layout (actual size)

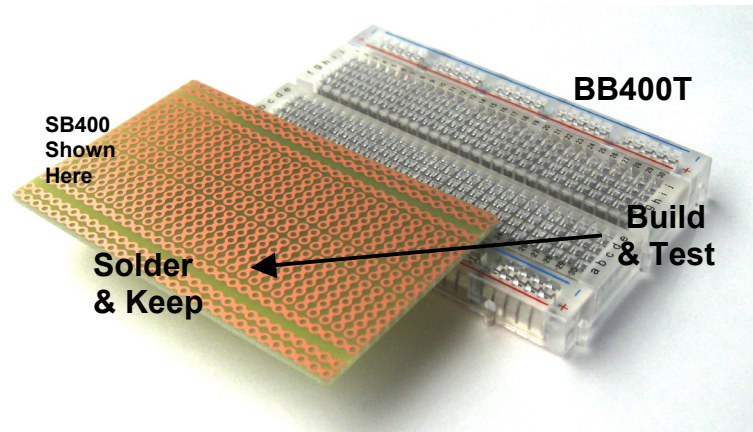


SB404 - Bottom Side Copper

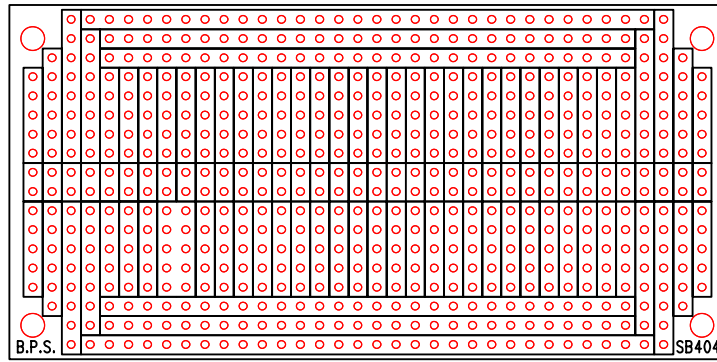
## Specifications

- High-quality etched FR4 glass-epoxy circuit board with top side silkscreen.
- Single sided, 1oz/ft<sup>2</sup> copper with an anti-tarnish coating for easy soldering. Lead free and RoHS compatible.
- Holes are drilled on 0.1" (2.54mm) centers.
- 628 holes total. 0.042" (1.07mm) holes sized for ICs or square post headers.
- Four 0.125" mounting holes.
- 1.85" tall, 3.75" long, 1/16" thick (95.3 x 47.0 x 1.6mm).

## Order Part# SB404

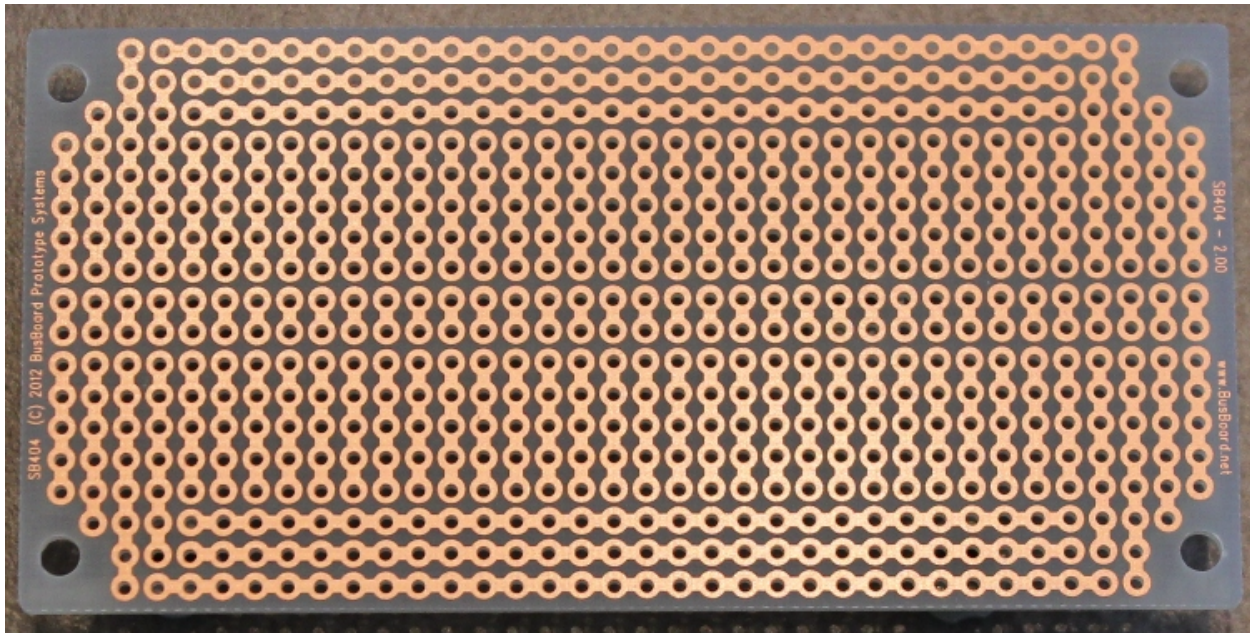


**Move Your Circuit From a  
BB400 Solderless Plug-in BreadBoard To a  
Permanent Solderable PC BreadBoard**

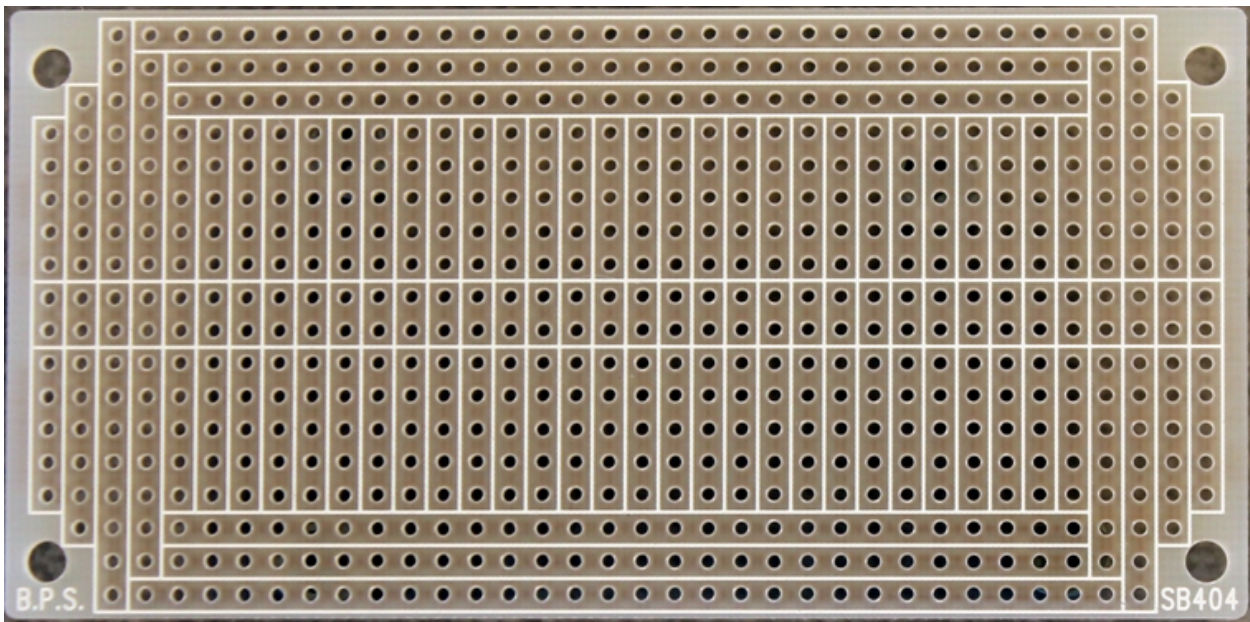


SB404 - Top Side Silkscreen

**Board Photos**



SB404 - Bottom Side



SB404 - Top Side Silkscreen

## Board Dimensions

