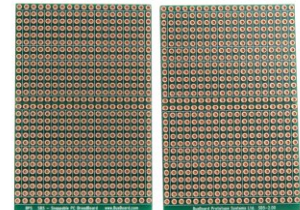
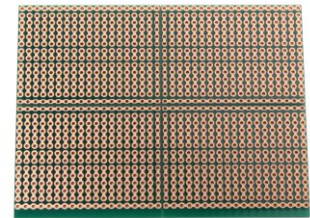
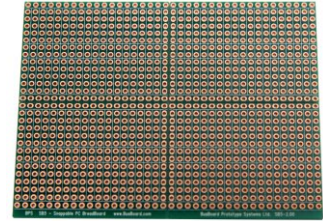
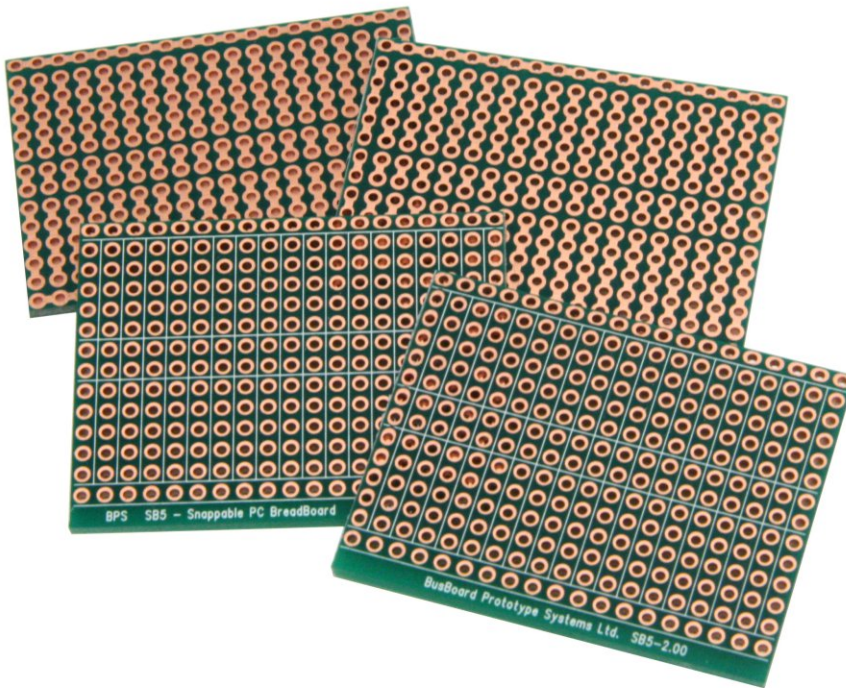


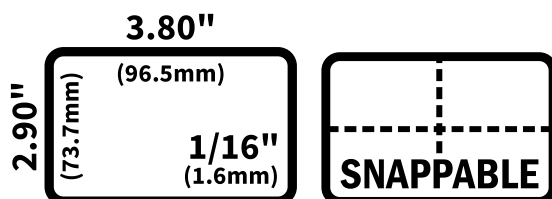
# SB5

**SB5 Snappable PCB BreadBoard with 5-Hole Strips with power rails and plated holes.**



## SB5 Features:

- Solderable PC breadboard with power rails.
- Snaps into 4 smaller boards for smaller projects.
- Each smaller board has the same 5-hole strip pattern with power rails.
- Double-sided high-quality FR4 glass-epoxy circuit board. Plated holes.
- Top side silkscreen shows which pads are connected. Soldermask provided.
- 1 oz/ft<sup>2</sup> copper with an anti-tarnish coating for easy soldering.
- 1064 plated holes, 0.042" holes are drilled on 0.1" (2.54mm) centers.



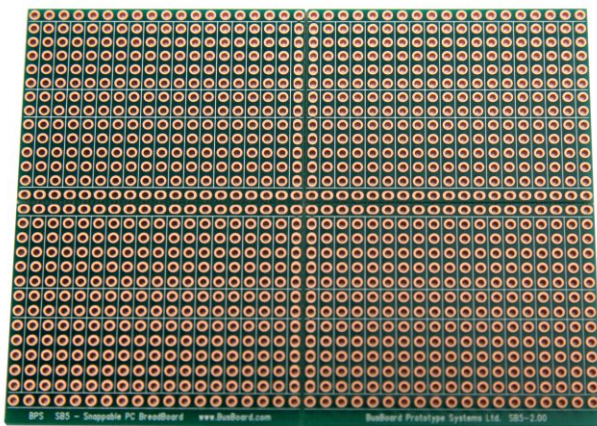
## SB5 Details:

The SB5 Snappable PC BreadBoard is great for a small project, or four tiny projects. It can be used as a single prototyping board, or it can be snapped into two or four smaller boards. It is scored in two places along the middle to make snapping into smaller pieces easy. The SB5 solderable PCB breadboard is great for soldering your breadboard projects to make rugged prototypes.

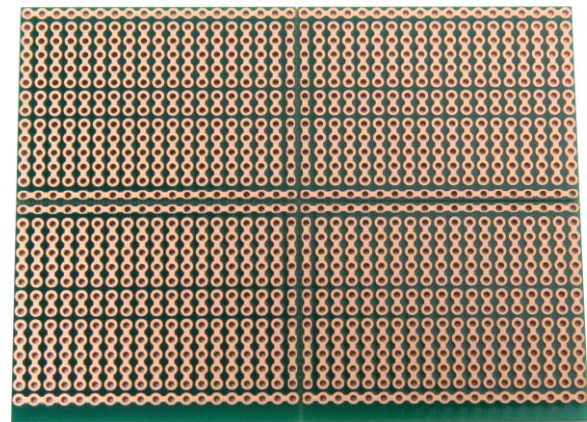
All four of the smaller boards have 5-hole strips, which are good for IC circuits.

Each of the four smaller boards has two power rails. There are bonus two-hole pads along the centerline allowing DIL (dual in-line) headers to be used (some boards leave that area empty). A top-side silkscreen helps to position components.

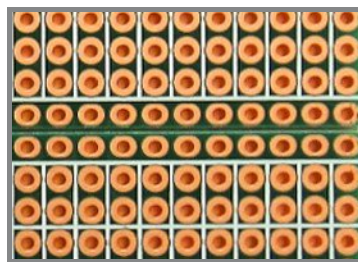
BPS prototyping boards use high-quality FR4 glass epoxy PCBs for long life. An anti-tarnish coating protects the copper for a long shelf-life and provides easy soldering. BPS boards are lead-free and RoHS compatible.



SB5 Top View



SB5 Bottom View

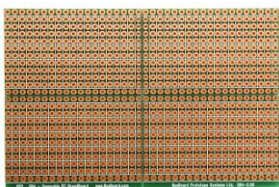


Silkscreen shows which pads are connected

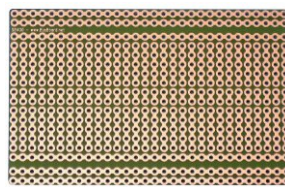
Scored lines for easy snapping

Each board has power rails

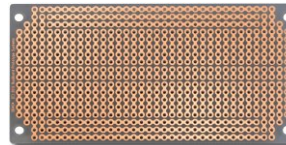
## Related Products:



SB4™ Snappable PCB BreadBoard



SB400 Solderable PC BreadBoard



SB404 Solderable PC BreadBoard



SB300 Solderable PC BreadBoard