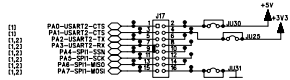
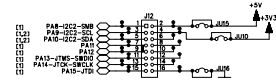


Port Expansion Connectors (for ribbon cables)
2x8 DIL Headers

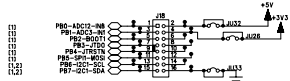
Port A0 to A7



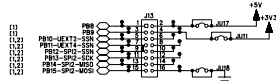
Port A8 to A15



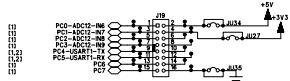
Port B0 to B7



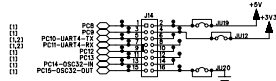
Port B8 to B15



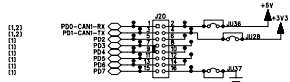
Port C0 to C7



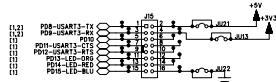
Port C8 to C15



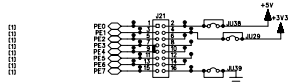
Port D0 to D7



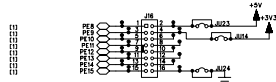
Port D8 to D15



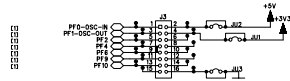
Port E0 to E7



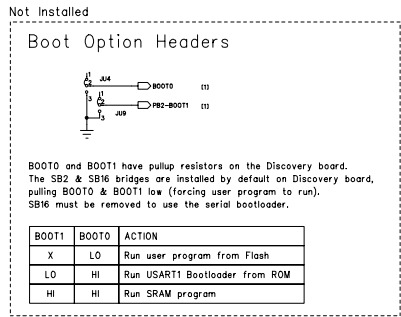
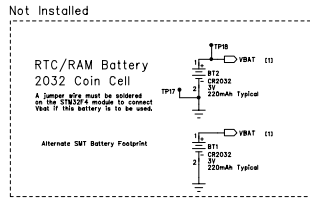
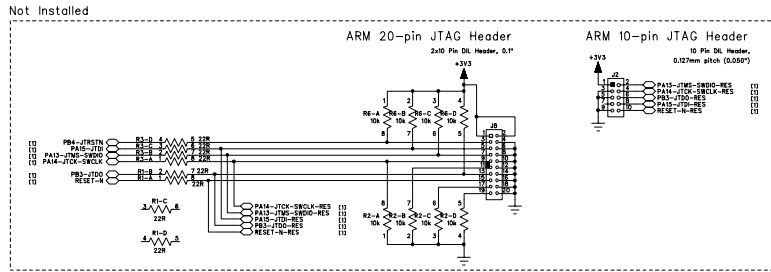
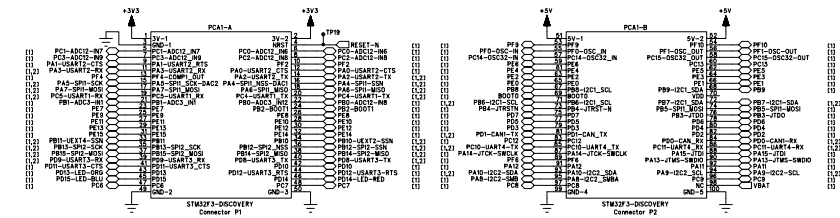
Port E8 to E15



Port F0 to F10



STMicro Discovery-F3 Board with STM32F303VCT6



BOOT1	BOOT0	ACTION
X	LO	Run user program from Flash
LO	HI	Run USART1 Bootloader from ROM
HI	HI	Run SRAM program

REV.	DATE	ECO NUMBER (DESCRIPTION)	APPR'D
1.01	19Jul13	PCB renumber applied.	SK

DESIGNED	DATE
Scott Kornak	Sept 2012
DRAWN	DATE
Scott Kornak	Sept 2012
CHECKED	DATE
Scott Kornak	Sept 2012
APPROVED	DATE
Scott Kornak	Sept 2012

Kornak Technologies Inc.
www.Kornak.ca Calgary, Alberta, Canada

This document is released by Kornak Technologies Inc. (KTI) to the general public. KTI retains all copyright and rights to the information contained in this document. It may be freely reproduced and distributed in unmodified form with all KTI company identification and copyright information intact.

[C] Copyright 2011 Kornak Technologies Inc. All Rights Reserved.

CLASSIFICATION
RELEASED TO PUBLIC

TITLE
**DISCOVERY
STM32-F3U
UEXT BaseBoard**

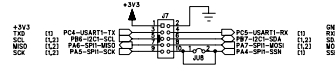
KTI DRAWING NUMBER - REVISION
SCH-(STM32-F3U-1.00) Rev1.01

DRAWING IS FOR PART NUMBER - REVISION
**PCB-STM32-F3U-1.00
(PCB-710-1.00)**

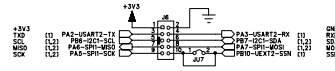
501-23 Pinout

* = Part fitted to incorrect decal. & = Part added as salvage. X = track cut.

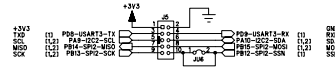
UEXT1 Expansion (USART1 + SPI1 + I2C1)
2x5 DIL Shrouded Header



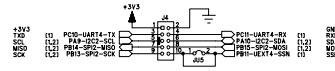
UEXT2 Expansion (USART2 + SPI1 + I2C1)
2x5 DIL Shrouded Header



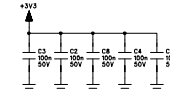
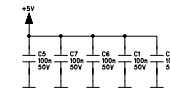
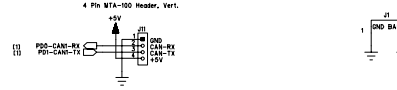
UEXT3 Expansion (USART3 + SPI2 + I2C2)
2x5 DIL Shrouded Header



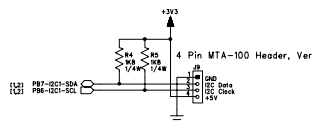
UEXT4 Expansion (USART4 + SPI2 + I2C2)
2x5 DIL Shrouded Header



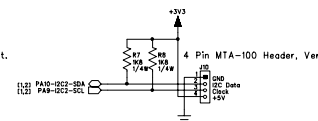
CAN #1 Header



I2C #1 Expansion



I2C #2 Expansion



501-23 Pinout



* = Part fitted to incorrect decal. & = Part added as salvage. X = track cut.

REV.	DATE	ECO NUMBER (DESCRIPTION)	APPR'D

DESIGNED Scot Kornak	DATE Sept 2012
DRAWN Scot Kornak	DATE Sept 2012
CHECKED Scot Kornak	DATE Sept 2012
APPROVED Scot Kornak	DATE Sept 2012

Kornak Technologies Inc.
www.Kornak.ca Calgary, Alberta, Canada

This document is released by Kornak Technologies Inc. (KTI) to the general public. KTI retains all copyright and rights to the information contained in this document. It may be freely reproduced and distributed in unmodified form with all KTI company identification and copyright information intact.

(C) Copyright 2011 Kornak Technologies Inc. All Rights Reserved.

CLASSIFICATION
RELEASED TO PUBLIC

TITLE
DISCOVERY
STM32-F3U
UEXT BASEBOARD

CLI DRAWING NUMBER - REVISION
SCH-(STM32-F3U-1.00) Rev1.01

DRAWING IS FOR PART NUMBER - REVISION
PCB-STM32-F3U-1.00
(PCB-710-1.00)