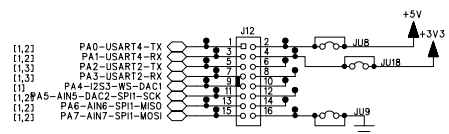
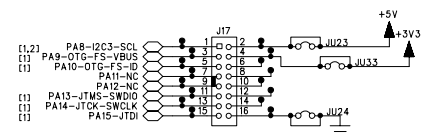


Port Expansion Connectors (for ribbon cables) 2x8 DIL Headers

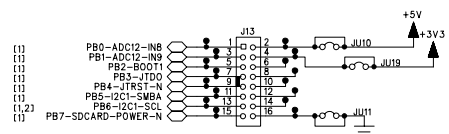
Port A0 to A7



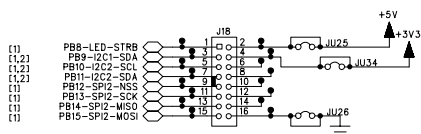
Port A8 to A15



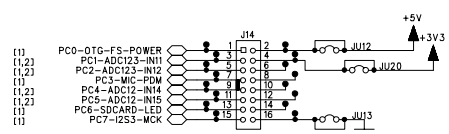
Port B0 to B7



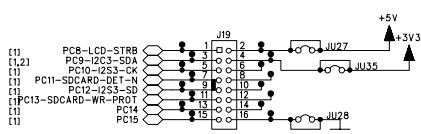
Port B8 to B15



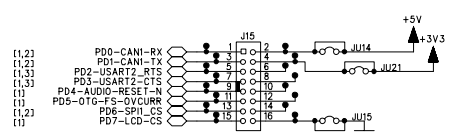
Port C0 to C7



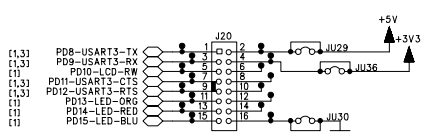
Port C8 to C15



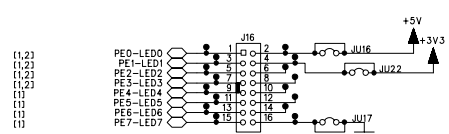
Port D0 to D7



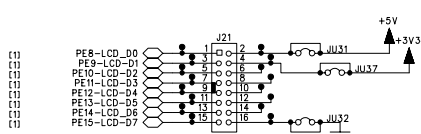
Port D8 to D15



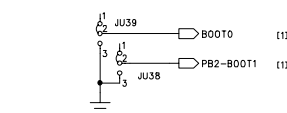
Port E0 to E7



Port E8 to E15



Boot Option Headers



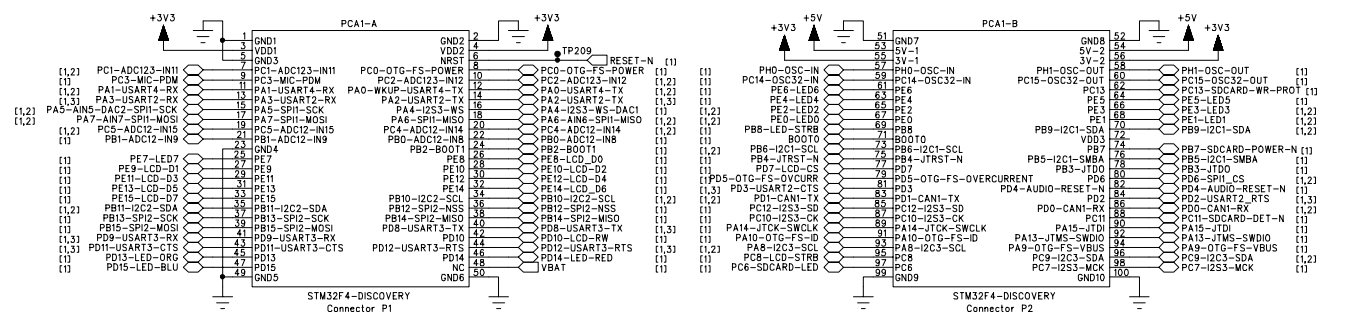
BOOT0 and BOOT1 have pullup resistors on the Discovery-VL board. The SB2 & SB16 bridges are installed by default on Discovery board, pulling BOOT0 & BOOT1 low (forcing user program to run). SB16 must be removed to use serial bootloader.

BOOT1	BOOT0	ACTION
X	LO	Run user program from Flash
LO	HI	Run USART1 Bootloader from ROM
HI	HI	Run SRAM program

SOT-23 Pinout

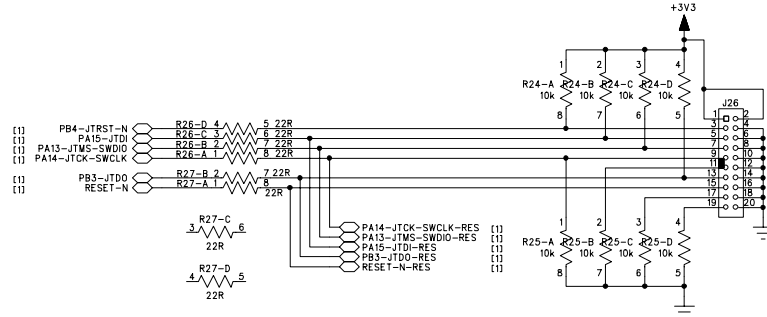


STMico Discovery-F4 Board with STM32F407VCT6



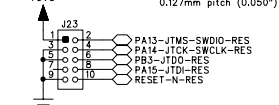
ARM 20-pin JTAG Header

2x10 Pin DIL Header, 0.1"



ARM 10-pin JTAG Header

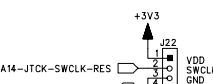
10 Pin DIL Header, 0.127mm pitch (0.050")



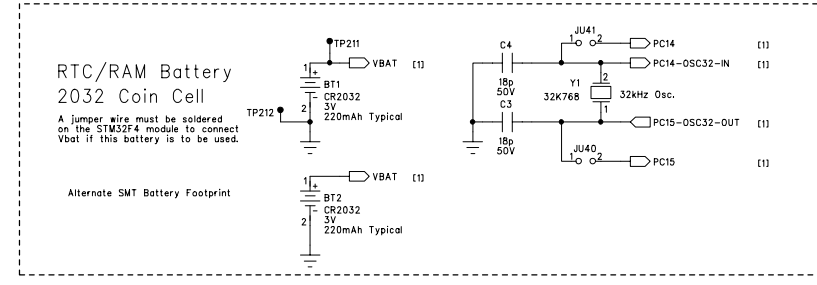
SWD Header

(Serial Wire Debug)

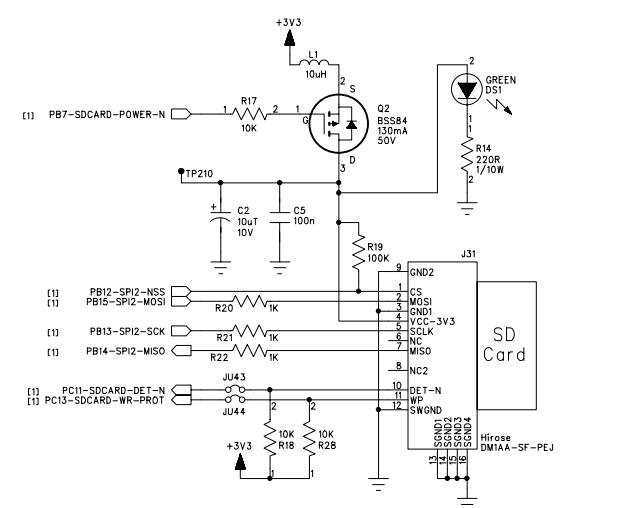
MTA-100 4-Pin SIL Header, 0.1" pitch



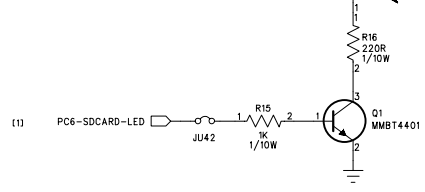
Not Installed



Secure Digital Card



SD Activity LED



REV.	DATE	ECO NUMBER (DESCRIPTION)	APPR'D
1.02	Mar 2014	PCB Rev 1.20 RS232 serial drivers added.	SK

DESIGNED	DATE
Scot Kornak	Dec 2011
DRAWN	DATE
Scot Kornak	Dec 2011
CHECKED	DATE
Scot Kornak	Jun 2012
APPROVED	DATE
Scot Kornak	Jun 2012

Kornak Technologies Inc.

www.Kornak.ca Calgary, Alberta, Canada

This document is released by Kornak Technologies Inc. (KTI) to the general public. KTI retains all copyright and rights to the information contained in this document. It may be freely reproduced and distributed in unmodified form with all KTI company identification and copyright information intact.

(C) Copyright 2011 Kornak Technologies Inc., All Rights Reserved.

CLASSIFICATION
RELEASED TO PUBLIC

TITLE
STM32F4 Discovery
BaseBoard F4B1

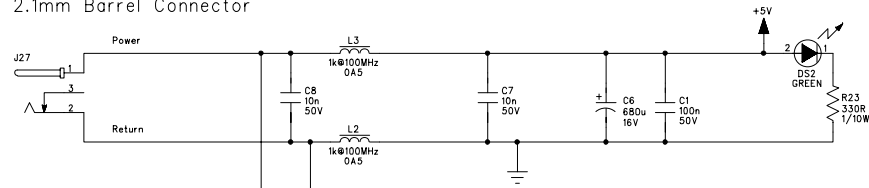
KTI DRAWING NUMBER - REVISION
SCH-(STM32-F4B1-1.20) Rev1.02

DRAWING IS FOR PART NUMBER - REVISION
PCB-STM32-F4B1-1.20
(PCB-640-1.20)

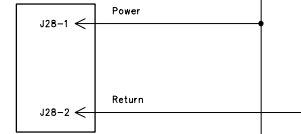
Designed by
Kornak Technologies
Calgary, Alberta
Contact:
403-267-9328
sales@kornak.ca www.kornak.ca

* = Part fitted to incorrect decal. & = Part added as salvage. X = track cut.

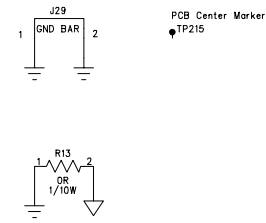
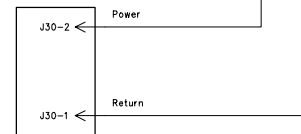
5VDC Power In
2.1mm Barrel Connector



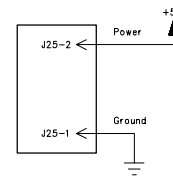
2 Position, 0.2" Pitch
RA Terminal Block



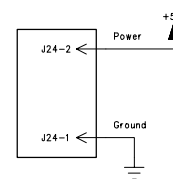
2 Pin MTA-100
Header, Vertical



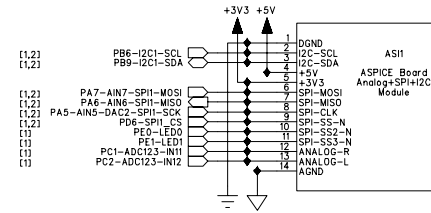
5VDC Power Out
2 Pin MTA-100 Header, Vertical



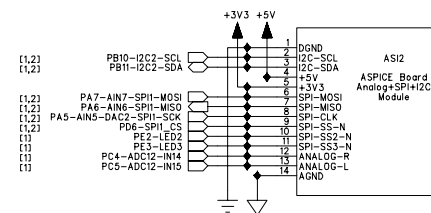
2 Pin MTA-100 Header, Vertical



ASPIICE Expansion 1

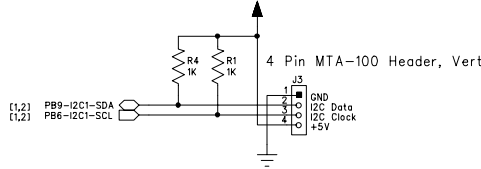


ASPIICE Expansion 2



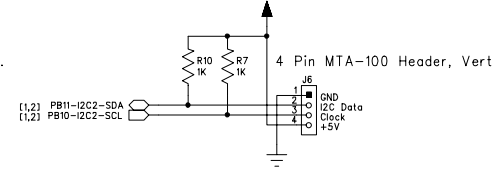
I2C #1 Used For AS11

I2C #1 Expansion

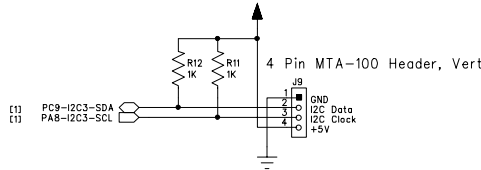


I2C #2, Used For AS12

I2C #2 Expansion

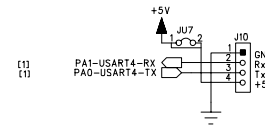


I2C #3 Expansion



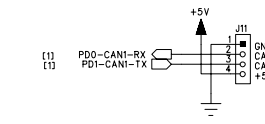
USART4 Header

4 Pin MTA-100 Header, Vert.



CAN #1 Header

4 Pin MTA-100 Header, Vert.



SOT-23 Pinout



* = Part fitted to incorrect decal. & = Part added as salvage. X = track cut.

REV.	DATE	ECO NUMBER (DESCRIPTION)	APPR'D
.	.	See page 1	.

DESIGNED Scot Kornak	DATE Dec 2011
DRAWN Scot Kornak	DATE Dec 2011
CHECKED Scot Kornak	DATE Jun 2012
APPROVED Scot Kornak	DATE Jun 2012

Kornak Technologies Inc.
www.Kornak.ca Calgary, Alberta, Canada

This document is released by Kornak Technologies Inc. (KTI) to the general public. KTI retains all copyright and rights to the information contained in this document. It may be freely reproduced and distributed in unmodified form with all KTI company identification and copyright information intact.

(C) Copyright 2011 Kornak Technologies Inc., All Rights Reserved.

CLASSIFICATION
RELEASED TO PUBLIC

TITLE
STM32F4 Discovery
BaseBoard F4B1

CLI DRAWING NUMBER - REVISION
SCH-(STM32-F4B1-1.20) Rev1.02

DRAWING IS FOR PART NUMBER - REVISION
PCB-STM32-F4B1-1.20
(PCB-640-1.20)

