



BusBoard PCB Selector Guide For Hammond Enclosures

Will it Fit?

Using Hammond boxes with our pre-fit ProtoBoards means that no PCB cutting is required and your prototype final assembly is quick. Just drill a few holes for a switch, lights, and connectors, and you're done. You probably already have a box shape and size in mind. Use our handy select guide to see which Hammond boxes have matching BPS protoboards.

Enclosures in this Guide:

- 1593V
- 1593W
- 1455L
- 1455N
- 1455C
- 1590B
- 1590BB
- 1553B
- 1553DBAT
- 1593K
- 1593L
- 1593P
- 1593Q

PCBs are available at these and other great distributors



1593V and 1593W Enclosures

The 1593V is a small plastic enclosure with end panels. It accepts a Size1 protoboard in the top and bottom sections. A rotated pattern is recommended for this box.



Size1 (80 x 50mm) PCBs for 1593V & 1593W

PART #	CLICK FOR DETAILS...	SERIES	PATTERN	SIDES	ROTATED PATTERN
PAD1		PadBoard	Pad-per-hole	Double-sided	<i>Not Applicable</i>
PR2H1		ProtoBoard	2-hole Pads	Single-sided	No
PR2H1-D		ProtoBoard	2-hole Pads	Double-sided	No
PR2H1-DR		ProtoBoard	2-hole Pads	Double-sided	Yes - 90 degrees
PR6H1-D		ProtoBoard	6-hole Pads	Double-sided	No
PR6H1-DR		ProtoBoard	6-hole Pads	Double-sided	Yes - 90 degrees
ST1		StripBoard	Full-length Tracks	Single-sided	No
ST1-D		StripBoard	Full-length Tracks	Double-sided	No
ST1-DR		StripBoard	Full-length Tracks	Double-sided	Yes - 90 degrees

Check out our Surface Mount PCBs (SMT) for this enclosure [CLICK FOR DETAILS...](#)

The 1593W is a plastic enclosure with end panels. It accepts a Size2 protoboard in the top and bottom sections. Size1 protoboards from the table above can also be used with the 1593W.



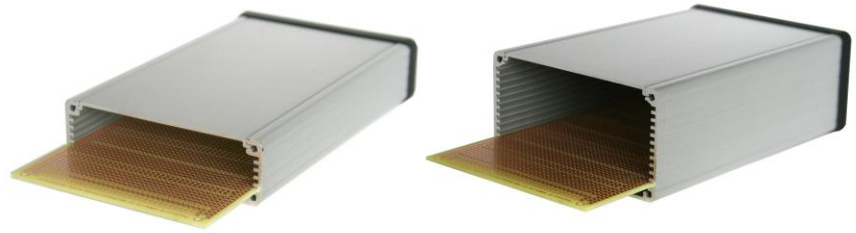
Size2 (100 x 80mm) PCBs for 1593W

PART #	CLICK FOR DETAILS...	SERIES	PATTERN	SIDES	ROTATED PATTERN
BB2		BusBoard	2-hole Pad Zig-zag	Single-sided	No
PAD2		PadBoard	Pad-per-hole	Double-sided	<i>Not Applicable</i>
PR2H2		ProtoBoard	2-hole Pads	Single-sided	No
PR2H2-D		ProtoBoard	2-hole Pads	Double-sided	No
PR2H2-DR		ProtoBoard	2-hole Pads	Double-sided	Yes - 90 degrees
PR6H2-D		ProtoBoard	6-hole Pads	Double-sided	No
PR6H2-DR		ProtoBoard	6-hole Pads	Double-sided	Yes - 90 degrees
ST2		StripBoard	Full-length Tracks	Single-sided	No
ST2-D		StripBoard	Full-length Tracks	Double-sided	No
ST2-DR		StripBoard	Full-length Tracks	Double-sided	Yes - 90 degrees

Check out our Surface Mount PCBs (SMT) for this enclosure [CLICK FOR DETAILS...](#)

1455L and 1455N Enclosures

These extruded enclosures accept Size3 protoboards which slide into the built-in card guides. 1455N is the taller box. A plastic bezel and metal endplate provide a professional cover.



Size3 (160 x 100mm) PCBs for 1455L1601 & 1455N1601

PART #	CLICK FOR DETAILS...	SERIES	PATTERN	SIDES	ROTATED PATTERN
BB3U		BusBoard	2-hole Pad Zig-zag	Single-sided	No
PAD3U		PadBoard	Pad-per-hole	Double-sided	Not Applicable
POW3U		PowerBoard	6-hole Pads w/ Rails	Single-sided	No
PR2H3U		ProtoBoard	2-hole Pads	Single-sided	No
PR3U		ProtoBoard	6-hole Pads	Single-sided	No
PR3UC		ProtoBoard	6-hole Pads w/ Conn	Single-sided	No
PR6H3-D		ProtoBoard	6-hole Pads	Double-sided	No
ST3U		StripBoard	Full-length Tracks	Single-sided	No

Check out our Surface Mount PCBs (SMT) for this enclosure [CLICK FOR DETAILS...](#)

The 1455L801 is a smaller extrusion that accepts a Size2 protoboard sideways in its card guides. A rotated pattern is recommended for this box.



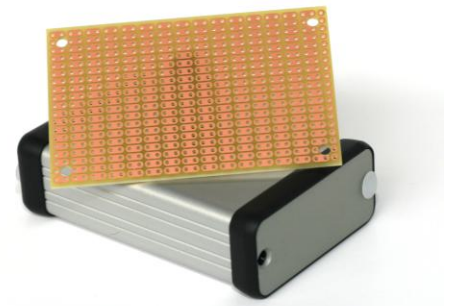
Size2 (100 x 80mm) PCBs for 1455L801

PART #	CLICK FOR DETAILS...	SERIES	PATTERN	SIDES	ROTATED PATTERN
BB2		BusBoard	2-hole Pad Zig-zag	Single-sided	No
PAD2		PadBoard	Pad-per-hole	Double-sided	Not Applicable
PR2H2		ProtoBoard	2-hole Pads	Single-sided	No
PR2H2-D		ProtoBoard	2-hole Pads	Double-sided	No
PR2H2-DR		ProtoBoard	2-hole Pads	Double-sided	Yes - 90 degrees
PR6H2-D		ProtoBoard	6-hole Pads	Double-sided	No
PR6H2-DR		ProtoBoard	6-hole Pads	Double-sided	Yes - 90 degrees
ST2		StripBoard	Full-length Tracks	Single-sided	No
ST2-D		StripBoard	Full-length Tracks	Double-sided	No
ST2-DR		StripBoard	Full-length Tracks	Double-sided	Yes - 90 degrees

Check out our Surface Mount PCBs (SMT) for this enclosure [CLICK FOR DETAILS...](#)

1455C Enclosures

This extruded enclosure accepts Size1 protoboards which slide into the built-in card guides. A plastic bezel and metal endplate provide a professional cover. A non-rotated pattern is recommended for this box.

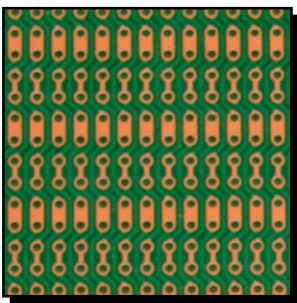


Size1 (80 x 50mm) PCBs for 1455C801

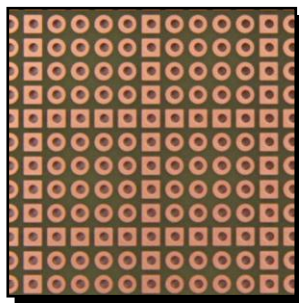
PART #	CLICK FOR DETAILS...	SERIES	PATTERN	SIDES	ROTATED PATTERN
PAD1		PadBoard	Pad-per-hole	Double-sided	<i>Not Applicable</i>
PR2H1		ProtoBoard	2-hole Pads	Single-sided	No
PR2H1-D		ProtoBoard	2-hole Pads	Double-sided	No
PR2H1-DR		ProtoBoard	2-hole Pads	Double-sided	Yes - 90 degrees
PR6H1-D		ProtoBoard	6-hole Pads	Double-sided	No
PR6H1-DR		ProtoBoard	6-hole Pads	Double-sided	Yes - 90 degrees
ST1		StripBoard	Full-length Tracks	Single-sided	No
ST1-D		StripBoard	Full-length Tracks	Double-sided	No
ST1-DR		StripBoard	Full-length Tracks	Double-sided	Yes - 90 degrees

Check out our Surface Mount PCBs (SMT) for this enclosure [CLICK FOR DETAILS...](#)

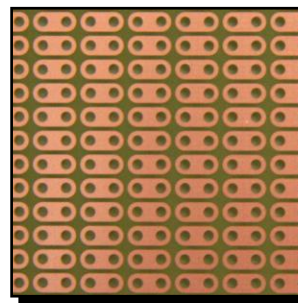
PCB Series & Patterns



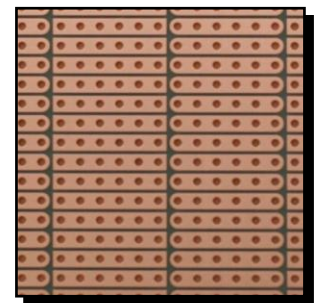
BusBoard
2-hole Pad Zig-Zag



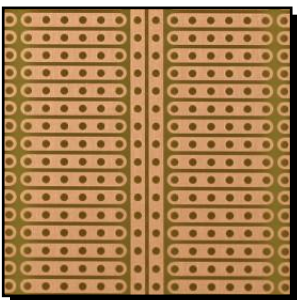
PadBoard
Pad-per-hole



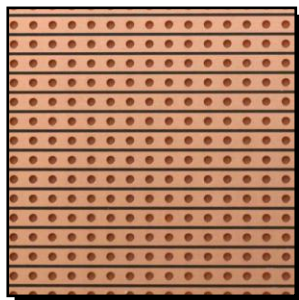
ProtoBoard
2-hole Pads



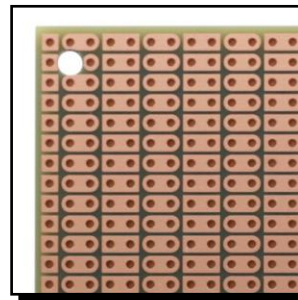
ProtoBoard
6-hole Pads



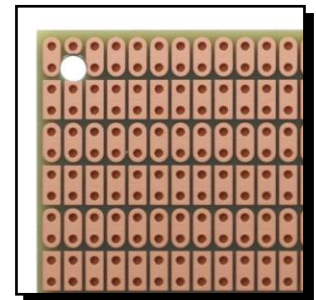
PowBoard
6-hole Pads w/ Rails



StripBoard
Full-length Tracks



Non-rotated
Pads run the length
of the board



Rotated
Pads run the width
of the board

1590B, 1553B, & 1593 Enclosures

BusBoard has custom ProtoBoards specifically designed for these Hammond enclosures.



1593K
ProtoBoard
2-hole Pad, Single-sided



1593L
ProtoBoard
2-hole Pad, Single-sided



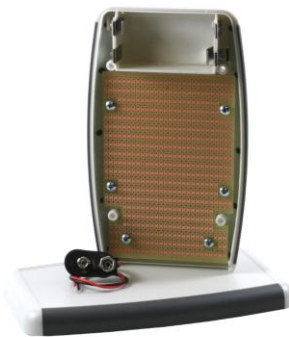
1593P
ProtoBoard
2-hole Pad, Single-sided



1593Q
ProtoBoard
2-hole Pad, Single-sided



1553B / C
ProtoBoard
2-hole Pad, Single-sided



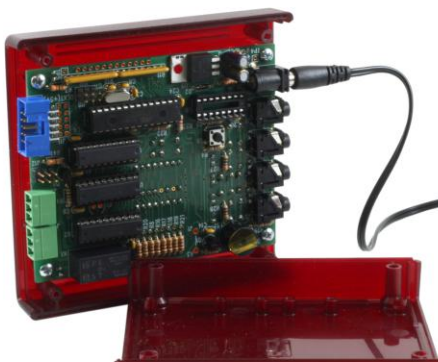
1553DBAT
ProtoBoard
2-hole Pad, Single-sided



1590B
ProtoBoard
2-hole Pad, Single-sided



1590BB
ProtoBoard
2-hole Pad, Single-sided



TELL US WHAT YOU'RE BUILDING!

We don't just want to make great products, we want to know how they are making your design work and prototype building easier and better. Let us know what you're creating - from an early design to a complete product - so that we can continue making the products you need for success!



info@busboard.com





Contact Info

BusBoard Prototype Systems Ltd.
#612-500 Country Hills Blvd NE, Suite 140,
Calgary, Alberta, T3K 5K3
CANADA

Phone: 1-403-567-3752

info@busboard.com

www.BusBoard.com